

# MAGIS EXCHANGE





**AN EXCHANGE PROGRAM THAT  
WILL TRANSFORM YOU INTO A  
CITIZEN OF THE WORLD,  
A GLOBAL AGENT OF CHANGE**

# ABOUT THE PROGRAM

The Magis Exchange program is an innovative and one-of-a-kind higher education student exchange program of the International Association of Jesuit Universities (IAJU) that aims to build cohorts of citizens who have participated in a unique semester-long academic and service international exchange.

Magis Exchange seeks to promote Ignatian "men and women for others" in a cross-cultural setting, foster leadership and reflection about current pressing social and environmental issues.

As well as the international academic experience, Magis students participate in a Global Environmental Citizen course and service experience in their international destination as these dimensions help students to discern their role as agents of change as citizens in this new global context, advocating for a more just, humane, and empathetic world.

# DIMENSIONS

## ACADEMICS

Exchange students are allowed to register in any available course for which they are academically and linguistically qualified.

More detailed information regarding the academic offer and requirements will be provided by the Office of International Relations of each university.

## SERVICE EXPERIENCE

A Jesuit missions' co-curricular component, developed by the host institution as service-learning, an internship related to the mission of the university or volunteering experiences.

The service experience allows students to better understand and be committed to the different realities of the context of their destination so they can be part of the improvement of our globalized world.

## GLOBAL ENVIRONMENTAL CITIZEN

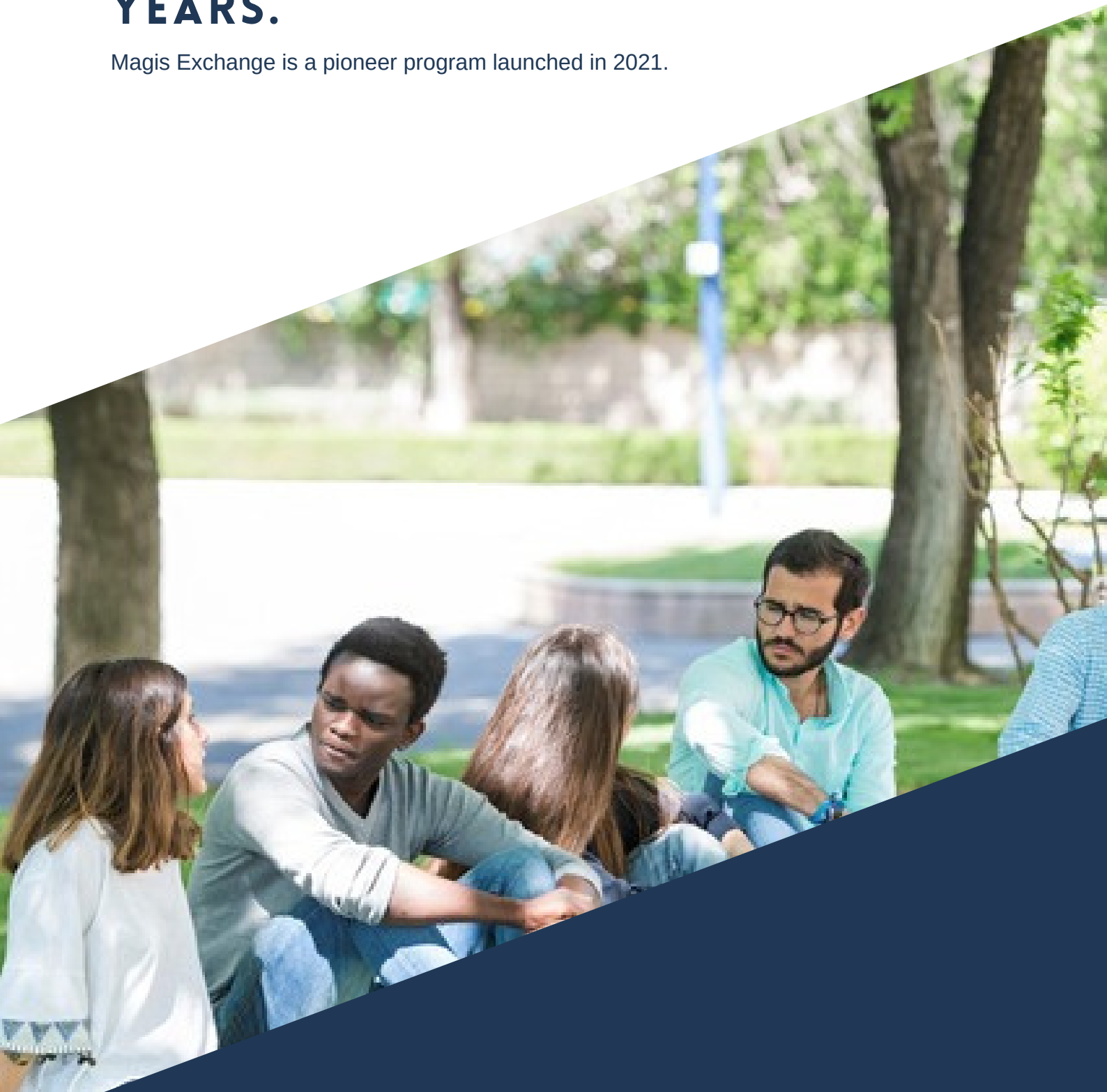
A two-semester online course instructed by Loyola University Chicago in which students are presented with local and global impacts on biodiversity loss, water scarcity, and climate change to evaluate them both from a moral and spiritual perspective.

This interactive and cross-cultural experience allows students to compare, contrast, understand and embrace the diversity of nature as they learn from both their home country and their host country.

\*Students will receive a **diploma** from the International Association of Jesuit Universities certifying them as a global citizen educated by Jesuit universities.

# **OUR FUTURE PLANS: THE MAGIS EXCHANGE GLOBAL ALUMNI NETWORK WILL BE DEVELOPED IN THE FOLLOWING YEARS.**

Magis Exchange is a pioneer program launched in 2021.





# INSTITUTIONS

**28 INSTITUTIONS**  
**5 CONTINENTS**



\*Students who are interested in Magis Exchange program can apply to study at any of the 28 participating IAJU member institutions.

**Read more about each Magis member university:**

<https://iaju.org/working-groups/magis-exchange-program>

**For more information:**

**Be in contact with your university's Office of International Programs or contact us.**

---

**ORGANIZED BY**



**INTERNATIONAL  
ASSOCIATION OF  
JESUIT UNIVERSITIES**

**MAGIS EXCHANGE PROGRAM**

**Coordinating Office Contact:**

igarrido@uloyola.es

**Website:**

<https://iaju.org/working-groups/magis-exchange-program>